

| REV | DESCRIPTION OF REVISION | ECN No. | BY | DATE | APPROVED |
|-----|-------------------------|---------|---------|----------|----------|
| A | INITIAL RELEASE | — | H. Xiao | 11/02/10 | 11/02/10 |

TECHNICAL DATA

Electrical data

| | |
|-----------------------|----------|
| Impedance | 50 Ω |
| Frequency range | 0~40 GHz |
| VSWR | 1.20:1 |
| Contact resistance | |
| -centre contact | ≤5mΩ |
| -outer contact | ≤2.5mΩ |
| Insulation resistance | ≥1000MΩ |

Mechanical data

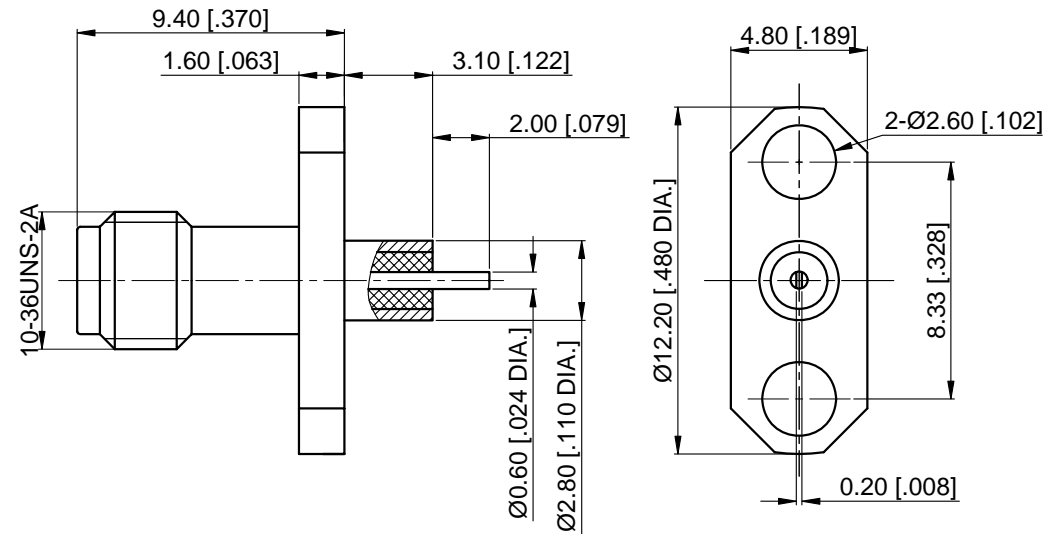
| | |
|----------------------|------------------|
| Temperature range | -55 °C ~ +165 °C |
| Durability (matings) | >500 |

Material data

| | |
|-------------|-------------------------------------|
| Body | Stainless Steel (SU303), Passivated |
| Pin Contact | Beryllium Copper Alloy, Gold-plated |
| Insulator | PEI, PTFE |

Interface Standards

| | |
|------|--------------|
| SSMA | MIL-STD-348A |
|------|--------------|



| Part Number | Figure |
|-----------------|--------|
| D60-02-9E5-009A | Fig. 1 |
| D60-02-9E5-009B | Fig. 2 |

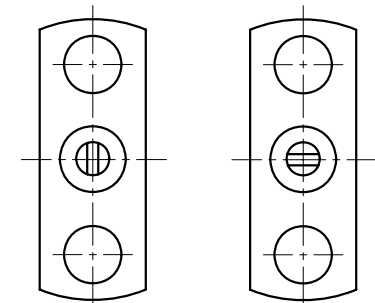

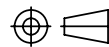


Fig. 1

Fig. 2

NOTES:

- ALL SPECIFICATIONS ARE SUBJECT TO CHANGE WITHOUT NOTICE AT ANY TIME
- CUSTOMER OUTLINE DRAWING FOR REFERENCE ONLY

| | | | | | | | | | | |
|--|---|---|-------|--------|--------|------|----|-----|-----|---|
| DRAWN: H. Xiao 11/02/10 | TITLE: |  www.cmppter.com | | | | | | | | |
| ENGINEER: YF. Zhu 11/02/10 | SSMA Straight Female, 2 Hole Flange, Metal Through the Wall | | | | | | | | | |
| APPROVED: M. Dong 11/02/10 | |  DIMENSIONS IN MILLIMETERS (mm) | | | | | | | | |
| TOLERANCE UNLESS OTHERWISE SPECIFIED | PART No.: D60-02-9E5-009 | <table border="1"> <tr> <td>SIZE:</td> <td>SCALE:</td> <td>SHEET:</td> <td>REV:</td> </tr> <tr> <td>A4</td> <td>4:1</td> <td>1/1</td> <td>A</td> </tr> </table> | SIZE: | SCALE: | SHEET: | REV: | A4 | 4:1 | 1/1 | A |
| SIZE: | SCALE: | SHEET: | REV: | | | | | | | |
| A4 | 4:1 | 1/1 | A | | | | | | | |
| X ±0.50 [.019"] .X ±0.20 [.008"] .XX ±0.10 [.004"] ANGLES ±1° | | | | | | | | | | |