

TECHNICAL DATA

Electrical

Impedance	50 Ω
Frequency range	0~18 GHz
Withstanding voltage	500 V
Insulation resistance	≥5000MΩ

Mechanical & Environmental

Durability (matings)	>500
Temperature range	-55 °C ~ +155 °C
RoHS Compliant	Yes

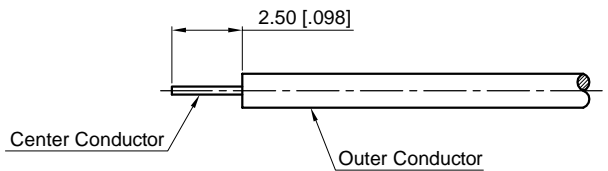
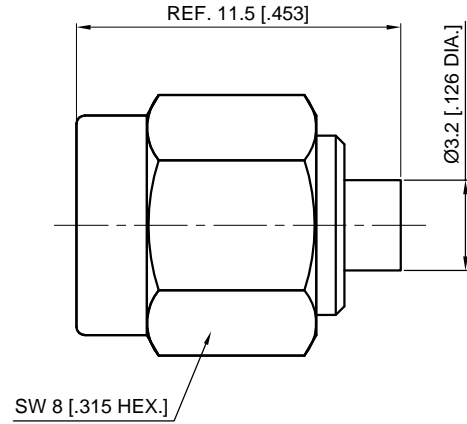
Material & Finish

Body	Brass, Gold-plated
Pin Contact	Brass, Gold-plated
Coupling Nut	Stainless Steel (SU303), Passivated
Inner Ferrule	Brass, Gold-plated
Insulator	PTFE
Gasket	Silicone rubber

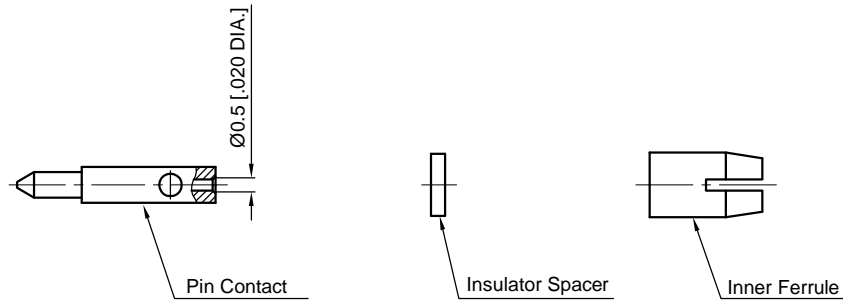
Interface Standards

SMA	IEC-60169
-----	-----------

REVISIONS				
REV	DESCRIPTION OF REVISION	ECN No.	DATE	APPROVED
A	INITIAL RELEASE	—	04/13/2020	M. Dong



Recommended Cable Stripping Dimensions



- NOTES:
- ALL SPECIFICATIONS ARE SUBJECT TO CHANGE WITHOUT NOTICE AT ANY TIME
 - UNLESS OTHERWISE SPECIFIED ALL DIMENSIONS ARE NOMINAL.

UNLESS OTHERWISE SPECIFIED, DIMENSIONS ARE IN MILLIMETERS (INCHES). UNLESS OTHERWISE SPECIFIED DIMENSIONAL TOLERANCES ARE: .XX ±0.13 [.005"] X ±0.20 [.008"] X ±0.50 [.019"] ANGULAR TOLERANCES ARE: ALL= ±1° DO NOT SCALE DRAWING PROJECTION:	DRAWN:	L. Ma	04/13/2020
	CHECKED:	J. Zhu	04/13/2020
	APPROVED:	M. Dong	04/13/2020
	TITLE:	SMA Straight Male Solder for .047 Cable	

CMP[®]TER

Cmpt[®]er Electronics Co., Ltd. [www.cmpt[®]er.com](http://www.cmpt[®]er.com)

PART No.:

60-03-2M16-362

SIZE:	SCALE:	SHEET:	REV:
A4	4:1	1/1	A