

# TECHNICAL DATA

## Electrical

Impedance 50 Ω  
 Frequency range 0~18 GHz  
 Withstanding voltage 500 V  
 Insulation resistance  $25 \times 10^3 \text{ M}\Omega$

## Mechanical & Environmental

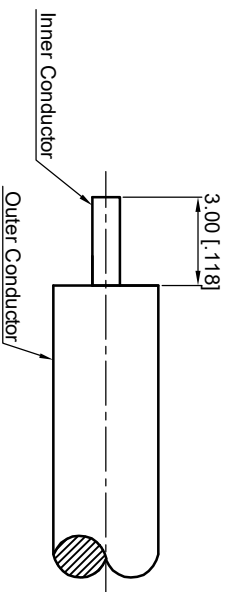
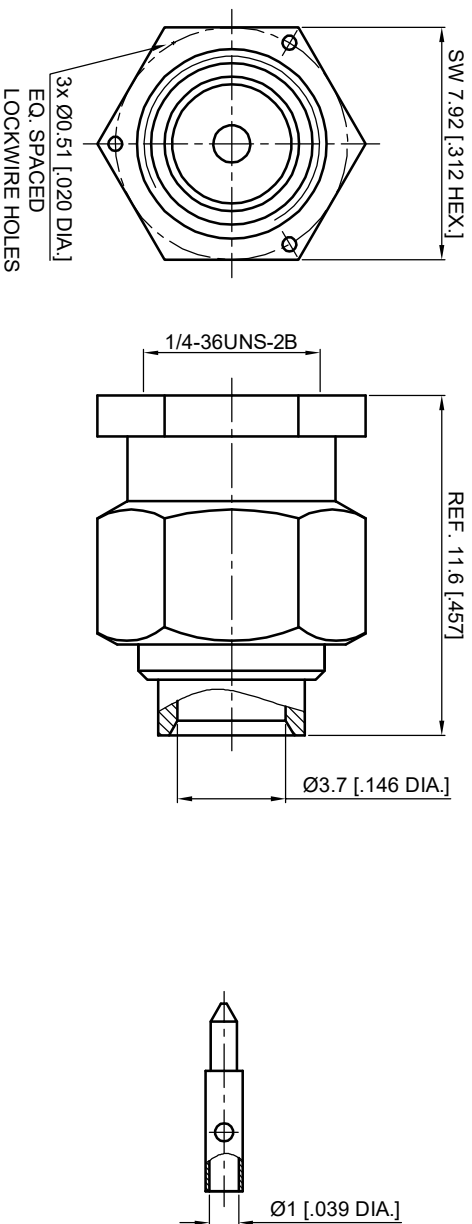
Durability (matings) >500  
 Temperature range  $-55^\circ\text{C} \sim +165^\circ\text{C}$   
 RoHS Compliant Yes

## Material & Finish

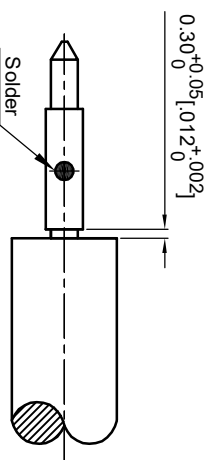
Body Brass, 0.1μm Gold plated  
 Pin Contact Brass, 0.1μm Gold plated  
 Coupling Nut Stainless Steel, Passivated  
 Insulator PTFE  
 Gasket Silicone Rubber

## Interface Standards

SMA IEC-60169



RECOMMENDED CABLE STRIPPING DIMENSIONS



PIN CONTACT SOLDERING DIMENSION

REVISIONS				
REV	DESCRIPTION OF REVISION	ECN No.	DATE	APPROVED
A	INITIAL RELEASE		06/21/2024	M. Dong

- NOTES:  
 1. ALL SPECIFICATIONS ARE SUBJECT TO CHANGE WITHOUT NOTICE AT ANY TIME  
 2. UNLESS OTHERWISE SPECIFIED ALL DIMENSIONS ARE NOMINAL.

UNLESS OTHERWISE SPECIFIED, DIMENSIONS ARE IN MILLIMETERS (INCHES). UNLESS OTHERWISE SPECIFIED DIMENSIONAL TOLERANCES ARE:	XX ±0.13 [0.0051]
	X ±0.20 [0.0081]
	X ±0.50 [0.0191]
ANGULAR TOLERANCES ARE:	ALL=±1°
DO NOT SCALE DRAWING	
PROJECTION:	

DRAWN:	L. Ma	06/21/2024
CHECKED:	J. Zhu	06/21/2024
APPROVED:	M. Dong	06/21/2024
TITLE:	SMA Straight Male Solder for RG402/141 Cable	

Cmppler Electronics Co., Ltd.  www.cmppler.com			
PART No.: 60-03-2M06-516			
SIZE:	A4	SCALE:	4:1
SHEET:	1/1	REV:	A