

TECHNICAL DATA

Electrical

Impedance 50 Ω
 Frequency range 0~18 GHz
 Withstanding voltage 500 V
 Insulation resistance ≥5000MΩ

Mechanical & Environmental

Durability (matings) >500
 Temperature range -55 °C ~ +165 °C
 RoHS Compliant Yes

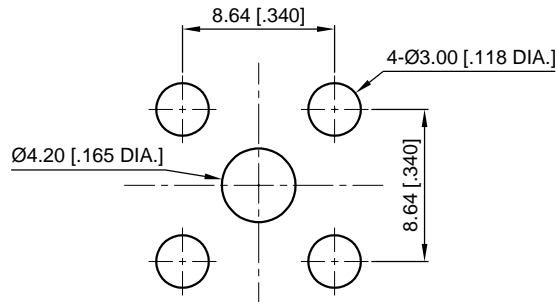
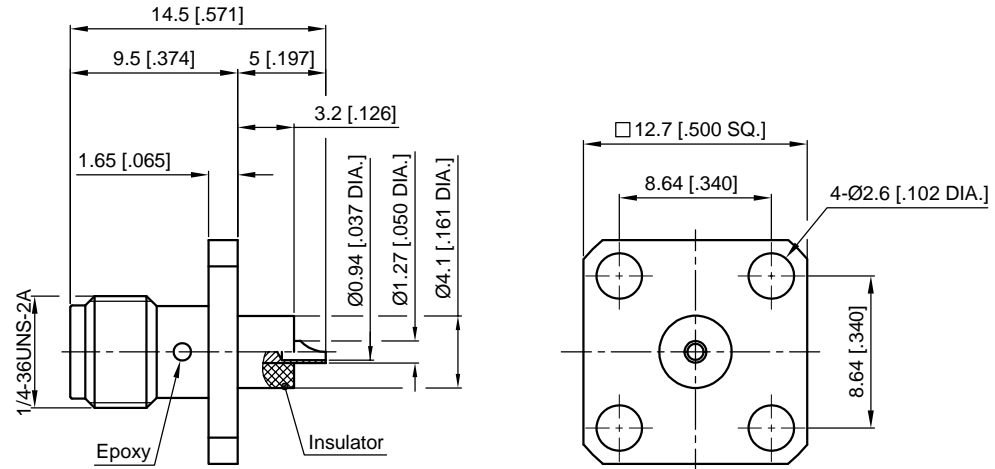
Material & Finish

Body Stainless Steel, Passivated
 Pin Contact Beryllium Copper Alloy, Gold plated
 Insulator PTFE

Interface Standards

SMA IEC-60169

REVISIONS				
REV	DESCRIPTION OF REVISION	ECN No.	DATE	APPROVED
A	INITIAL RELEASE	—	02/06/2024	M. Dong



Recommended Mounting Hole

NOTES:

- ALL SPECIFICATIONS ARE SUBJECT TO CHANGE WITHOUT NOTICE AT ANY TIME
- UNLESS OTHERWISE SPECIFIED ALL DIMENSIONS ARE NOMINAL.

UNLESS OTHERWISE SPECIFIED, DIMENSIONS ARE IN MILLIMETERS (INCHES). UNLESS OTHERWISE SPECIFIED DIMENSIONAL TOLERANCES ARE: .XX ±0.13 [005"] X ±0.20 [008"] X ±0.50 [019"] ANGULAR TOLERANCES ARE: ALL=±1° DO NOT SCALE DRAWING PROJECTION:	DRAWN: L. Ma 02/06/2024 CHECKED: J. Zhu 02/06/2024 APPROVED: M. Dong 02/06/2024 TITLE: SMA Straight Female with Solder Cup, 4 Hole Flange Mount
---	--

--	--

CMPPTER®
 Cmptter Electronics Co., Ltd. www.cmptter.com

PART No.: **60-02-8F1-502**

SIZE: A4	SCALE: 4:1	SHEET: 1/1	REV: A
----------	------------	------------	--------