

TECHNICAL DATA

Electrical

Impedance 50 Ω
 Frequency range 0~18 GHz
 Withstanding voltage 500 V
 Insulation resistance ≥5000MΩ

Mechanical & Environmental

Durability (matings) >500
 Temperature range -55 °C ~ +155 °C
 RoHS Compliant Yes

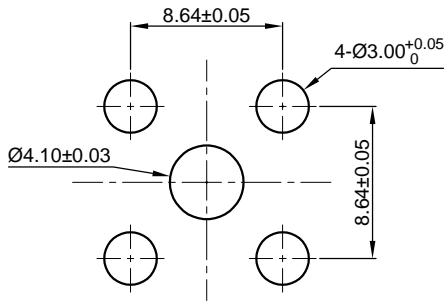
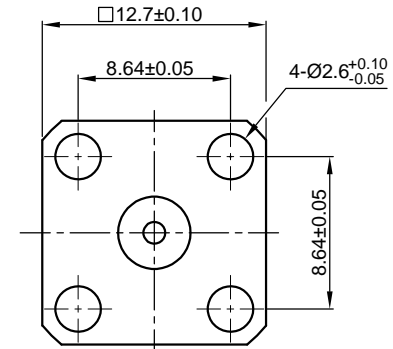
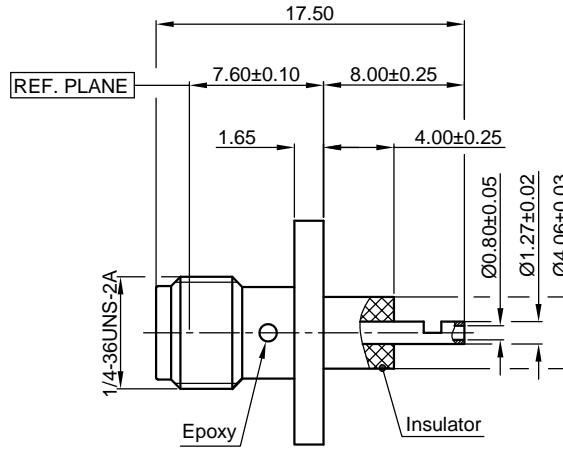
Material & Finish

Body Stainless Steel, Passivated
 Pin Contact Beryllium Copper Alloy, Gold-plated
 Insulator PTFE

Interface Standards

SMA IEC-60169

REVISIONS				
REV	DESCRIPTION OF REVISION	ECN No.	DATE	APPROVED
A	INITIAL RELEASE		05/21/2022	M. Dong



Recommended Mounting Hole

NOTES:

- ALL SPECIFICATIONS ARE SUBJECT TO CHANGE WITHOUT NOTICE AT ANY TIME
- UNLESS OTHERWISE SPECIFIED ALL DIMENSIONS ARE NOMINAL.

UNLESS OTHERWISE SPECIFIED, DIMENSIONS ARE IN MILLIMETERS	DRAWN:	L. Ma	05/21/2022
UNLESS OTHERWISE SPECIFIED DIMENSIONAL TOLERANCES ARE:	CHECKED:	J. Zhu	05/21/2022
.XX ±0.13 mm	APPROVED:	M. Dong	05/21/2022
X ±0.20 mm	TITLE:	SMA Straight Female with Solder Cup, 4 Hole Flange Mount	
X ±0.50 mm	ANGULAR TOLERANCES ARE:	ALL=±1°	
DO NOT SCALE DRAWING	PROJECTION:		

DRAWN: L. Ma 05/21/2022		
CHECKED: J. Zhu 05/21/2022		
APPROVED: M. Dong 05/21/2022		
TITLE: SMA Straight Female with Solder Cup, 4 Hole Flange Mount		

Cmptter Electronics Co., Ltd. www.cmptter.com			
PART No.: 60-02-8F1-441			
SIZE: A4	SCALE: 4:1	SHEET: 1/1	REV: A